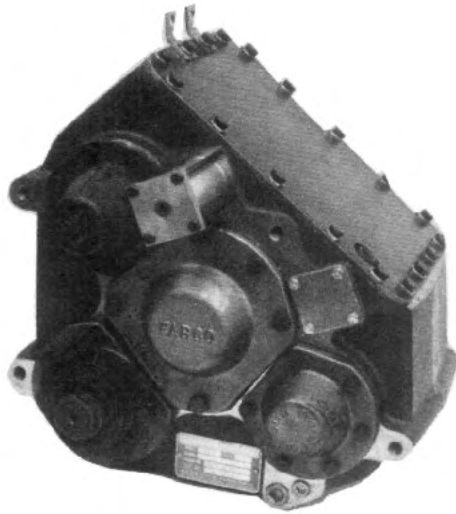


Part numbers contained in this manual were in effect at the time the manual was approved for printing and are subject to change without notice or liability, Fabco Automotive Corporation reserves the right to change parts at any time.



TC-38

Transfer Case

PARTS MANUAL

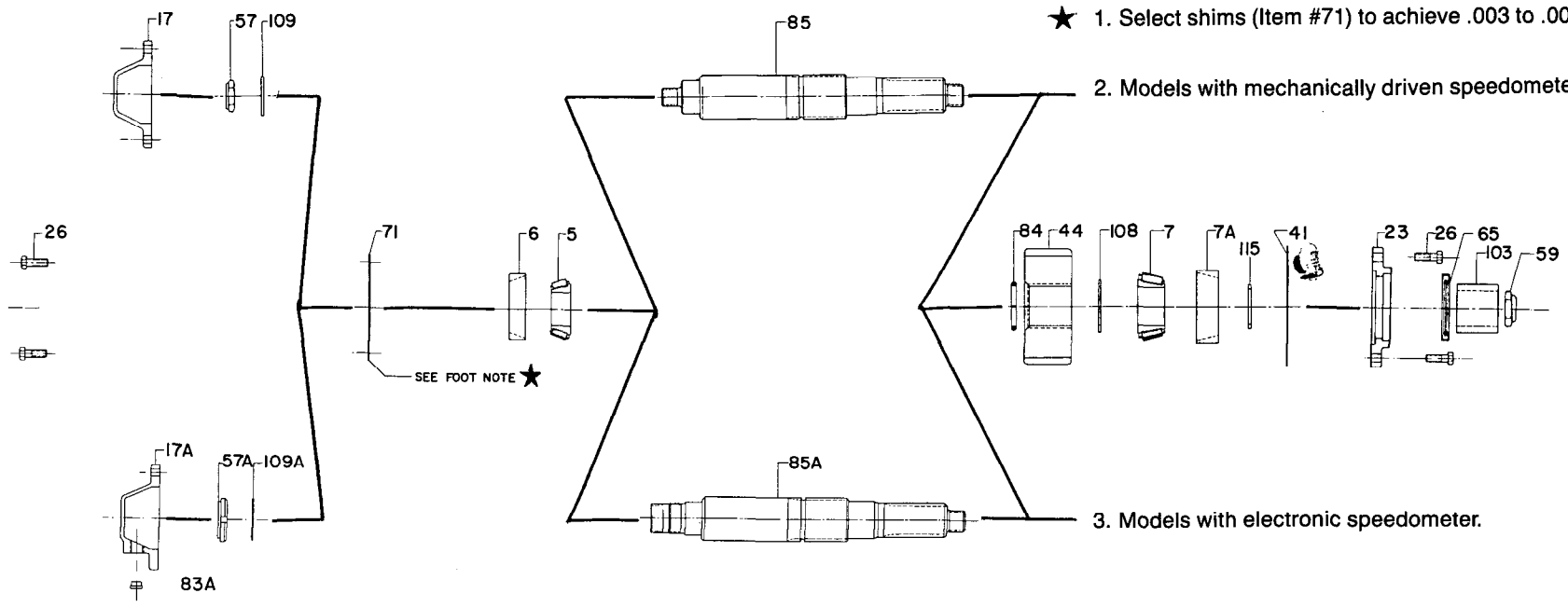
Before ordering parts for a Fabco transfer case, please refer to the Fabco nameplate located on the transfer case housing. Specify model number, serial number, part number, or other information that is on the nameplate when ordering parts.

FOOTNOTES:

★ 1. Select shims (Item #71) to achieve .003 to .008 end float.

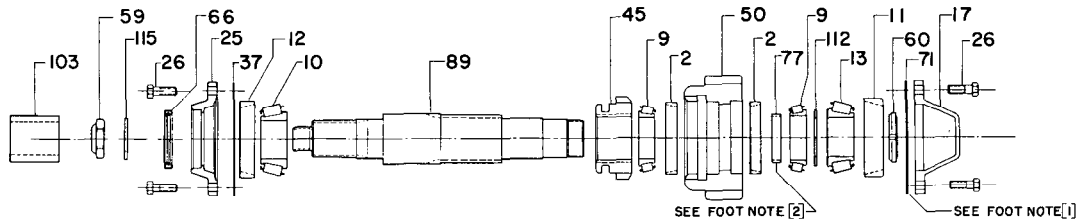
2. Models with mechanically driven speedometer.

3. Models with electronic speedometer.



| ITEM | PART NO. | DESCRIPTION | QTY | FOOT NOTE | | | | | |
|------|-------------|----------------------------------|-----|-----------|------|-------------|--|-----|---|
| | | | | | 71 | 7441322 | Shim, Coral .031 | A/R | |
| | | | | | | 7442322 | Shim, Pink .016 | A/R | 1 |
| | | | | | | 7443322 | Shim, Blue .005 | A/R | |
| | | | | | | 7444322 | Shim, Red .002 | A/R | |
| 5 | 233 455 | Bearing, Cone | 1 | | 83A | 758 374 108 | Plug, Speedo Shipping | 1 | 3 |
| 6 | 233 456 | Bearing, Cup | 1 | | 84 | 762 292 | Ring, Split Retaining | 1 | |
| 7 | 233 457 | Bearing, Cone | 1 | | 85 | 769 456 | Shaft, Rear Output | 1 | 2 |
| 7A | 233 458 | Bearing, Cup | 1 | | 85A | 769 466 | Shaft, Rear Output | 1 | 3 |
| 17 | 235 484 | Cap, Output Shaft Bearing | 1 | 2 | 103 | 883 988 | Tube, Shipping Oil Seal Protector | 1 | |
| 17A | 235 632 | Cap, Speedo | 1 | 3 | 108 | 927 758 | Washer, Bearing Spacer Rear Output | 1 | |
| 23 | 237 589 | Carrier, Rear Output | 1 | | 109 | 927 775 001 | Washer, Rear Output Shaft Front (1.062 ID x 2.25 OD x .187 Thk) | 1 | 2 |
| 26 | 265 238 | Bolt, HH 7/16-14 NC 1 1/4 | 12 | | 109A | 927 829 | Washer, Rear Output Shaft Front (1.78 ID x 2.25 OD x .125 Thk) | 1 | 3 |
| 41 | 427 466 | Gasket, Rear Output Seal Carrier | 1 | | 115 | 927 828 | Washer, Between Bearing & Yoke (1.957 ID x 2.50 OD x .125 Thk) | 1 | |
| 44 | 432 554 | Gear, 35T Rear Output | 1 | | | | | | |
| 57 | 688 634 | Nut, 1-20 Self Locking | 1 | 2 | | | | | |
| 57A | 688 743 | Nut, 1.767-18 Bearing Lock | 1 | 3 | | | | | |
| 59 | 688 697 004 | Nut, 1 1/2-12 Self Locking | 1 | | | | | | |
| 65 | 732 372 | Seal, Rear Output | 1 | | | | | | |

TC-38 REAR OUTPUT SHAFT



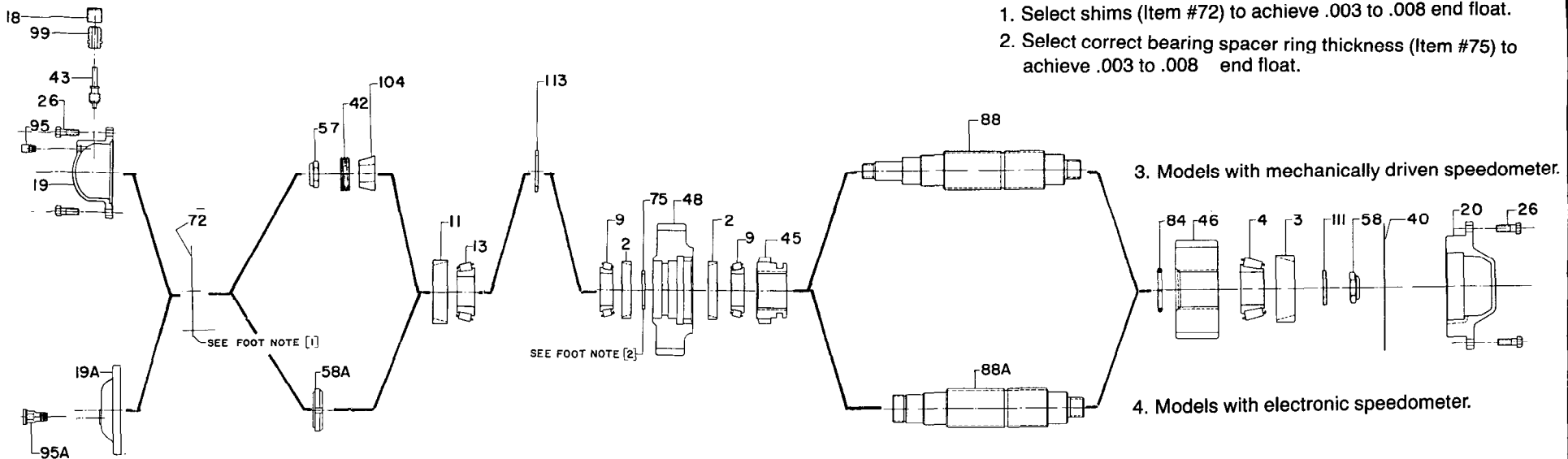
| ITEM | PART NO. | DESCRIPTION | QTY | FOOT NOTE |
|------|-------------|--|-----|-----------|
| 2 | 233 274 | Bearing, Cup | 2 | |
| 9 | 233 485 | Bearing, Cone | 2 | |
| 10 | 233 487 | Bearing, Cone | 1 | |
| 11 | 233 545 | Bearing, Cup | 1 | |
| 12 | 233 547 | Bearing, Cup | 1 | |
| 13 | 233 548 | Bearing, Cone | 1 | |
| 17 | 235 484 | Cap, Output Shaft Bearing | 1 | |
| 25 | 237 587 002 | Carrier, Front Output Seal | 1 | |
| 26 | 265 238 | Bolt, HH 7/16-14 NC 1 1/4 | 12 | |
| 37 | 427 339 | Gasket, Carrier | 1 | |
| 45 | 432 556 | Gear, 20T Clutch | 1 | |
| 50 | 432 677 | Gear, 35T Front Output | 1 | |
| 59 | 688 697 004 | Nut, 1 1/2-12 Self Locking | 1 | |
| 60 | 688 739 | Nut, 1 3/32-18 Bearing Lock | 1 | |
| 66 | 732 384 | Seal, Front Output | 1 | |
| 71 | 7441322 | Shim, Coral .031 | A/R | |
| | 7442322 | Shim, Pink .016 | A/R | 1 |
| | 7443322 | Shim, Blue .005 | A/R | |
| | 7444322 | Shim, Red .002 | A/R | |
| 77 | 756 268 011 | Ring, Brg Spcr .560 Thk | A/R | |
| | 756 268 012 | Ring, Brg Spcr .565 Thk | A/R | |
| | 756 268 013 | Ring, Brg Spcr .570 Thk | A/R | 2 |
| | 756 268 014 | Ring, Brg Spcr .575 Thk | A/R | |
| | 756 268 015 | Ring, Brg Spcr .580 Thk | A/R | |
| 89 | 769 455 | Shaft, Front Output | 1 | |
| 103 | 883 988 | Tube, Shipping Oil Seal Protector | 1 | |
| 112 | 927 827 001 | Washer, Front Output Shaft Rear (2.010 ID x 2.75 OD x .145 Thk) | 1 | |
| 115 | 927 828 | Washer, Between Bearing & Yoke (1.957 ID x 2.50 OD x .125 Thk) | 1 | |

FOOTNOTES:

1. Select shims (Item #71) to achieve .003 to .008 end float.
2. Select correct bearing spacer ring thickness (Item #77) to achieve .003 to .008 end float.

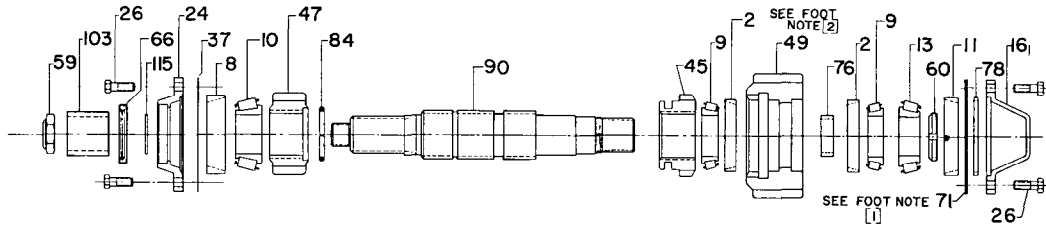
TC-38 FRONT OUTPUT SHAFT

FOOTNOTES:



| ITEM | PART NO. | DESCRIPTION | QTY | FOOT NOTE | | | | | |
|------|----------|-------------------------------|-----|-----------|-----|-------------|---|-----|---|
| 2 | 232 274 | Bearing, Cup | 2 | | 72 | 744 352 001 | Shim, Red .002 | A/R | |
| 3 | 233 376 | Bearing, Cup | 1 | | | 744 352 002 | Shim, Blue .005 | A/R | 1 |
| 4 | 233 377 | Bearing, Cone | 1 | | | 744 352 003 | Shim, Pink .015 | A/R | |
| 9 | 233 485 | Bearing, Cone | 2 | | | 744 352 004 | Shim, Coral .030 | A/R | |
| 11 | 233 545 | Bearing, Cup | 1 | | 75 | 756 268 001 | Ring, Brg Spcr .250 Thk | A/R | |
| 13 | 233 548 | Bearing, Cone | 1 | | | 756 268 002 | Ring, Brg Spcr .255 Thk | A/R | |
| 18 | 235 529 | Cap, Speedo, Shipping | 1 | 3 | | 756 268 003 | Ring, Brg Spcr .260 Thk | A/R | 2 |
| 19 | 235 622 | Cap, Intermediate Front | 1 | 3 | | 756 268 004 | Ring, Brg Spcr .265 Thk | A/R | |
| 19A | 235 629 | Cap, Intermediate Front | 1 | 4 | | 756 268 005 | Ring, Brg Spcr .270 Thk | A/R | |
| 20 | 235 623 | Cap, Intermediate Rear | 1 | | | | | | |
| 26 | 265 238 | Bolt, HH 7/16-14 NC x 1 1/4 | 12 | | 84 | 762 292 | Ring, Split Ret. | 1 | |
| 40 | 427 529 | Gasket, Intermediate Rear Cap | 1 | | 88 | 769 454 | Shaft, Intermediate | 1 | 3 |
| 42 | 432 234 | Gear, Speedo Drive 4T | 1 | 3 | 88A | 769 467 | Shaft, Intermediate | 1 | 4 |
| 43 | 432 235 | Gear, Speedo Driven 17T | 1 | 3 | 95 | 836 222 | Vent | 1 | 3 |
| 45 | 432 556 | Gear, 20T Clutch | 1 | | 95A | 836 223 | Vent | 1 | 4 |
| 46 | 432 558 | Gear, 34T Direct | 1 | | 99 | 883 473 | Tube, Speedo Driven Gear | 1 | 3 |
| 48 | 432 675 | Gear, 41T Underdrive | 1 | | 104 | 884 228 | Tube, Spacer Speedo Gear, .829 Thk | 1 | 3 |
| 57 | 688 634 | Nut, 1-20 Self Locking | 1 | 3 | 111 | 927 775 007 | Washer, Intermediate Shaft Rear (1.540 ID x 2.50 OD x .250 Thk) | 1 | |
| 58 | 688 694 | Nut, 1 1/2-12 Self Locking | 1 | | 113 | 927 827 003 | Washer, Intermediate Shaft Front (2.010 ID x 2.75 OD x .080 Thk) | 1 | 3 |
| 58A | 688 739 | Nut, 1 3/32-18 Bearing Lock | 1 | 4 | | | | | |

TC-38 INTERMEDIATE SHAFT

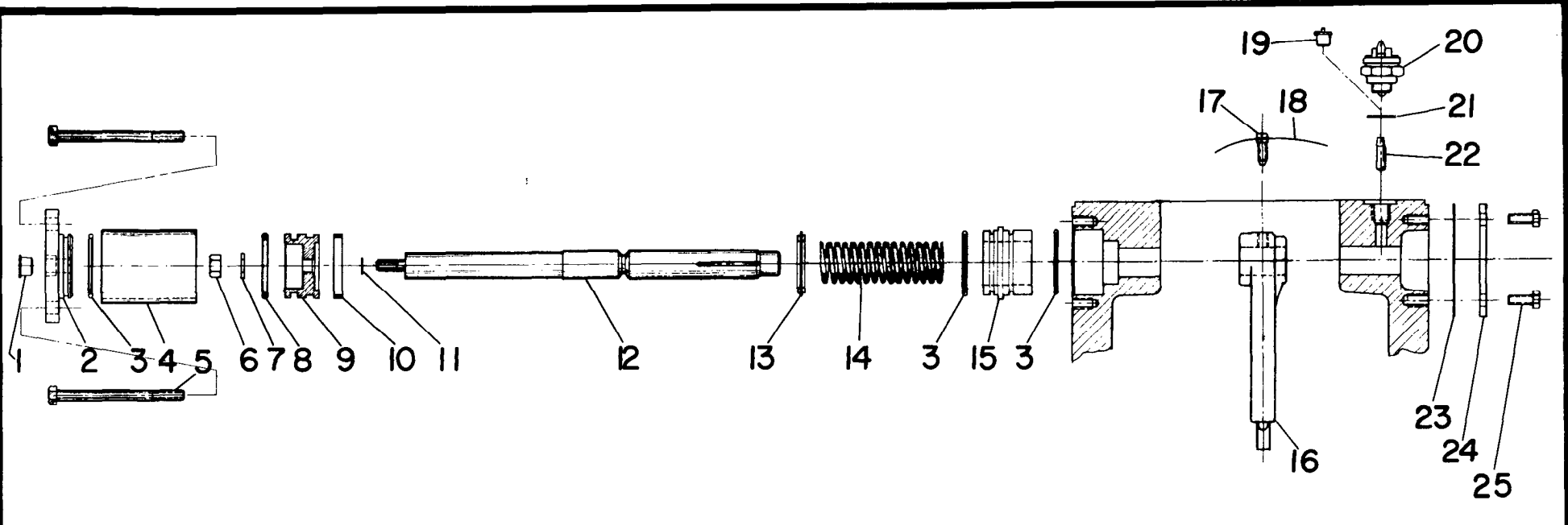


| ITEM | PART NO. | DESCRIPTION | QTY | FOOT NOTE |
|------|-------------|--|-----|-----------|
| 2 | 233 274 | Bearing, Cup | 2 | |
| 8 | 233 479 | Bearing, Cup | 1 | |
| 9 | 233 485 | Bearing, Cone | 2 | |
| 10 | 233 487 | Bearing, Cone | 1 | |
| 11 | 233 545 | Bearing, Cup | 1 | |
| 13 | 233 548 | Bearing, Cone | 1 | |
| 16 | 235 375 002 | Cap, Input Shaft Rear | 1 | |
| 24 | 237 587 001 | Carrier, Seal, Input | 1 | |
| 26 | 265 238 | Bolt, HH 7/16-14 NC x 1 1/4 | 12 | |
| 37 | 427 339 | Gasket, Carrier | 1 | |
| 45 | 432 556 | Gear, 20T Clutch | 1 | |
| 47 | 432 674 | Gear, 19T Underdrive Pinion | 1 | |
| 49 | 432 676 | Gear, 35T Input | 1 | |
| 59 | 688 697 004 | Nut, 1 1/2-12 Self Locking | 1 | |
| 60 | 688 739 | Nut, 1 3/32-18 Bearing Lock | 1 | |
| 66 | 732 384 | Seal, Input & Front Output | 1 | |
| 71 | 7441322 | Shim, Coral .031 | A/R | |
| | 7442322 | Shim, Pink .016 | A/R | 1 |
| | 7443322 | Shim, Blue .005 | A/R | |
| | 7444322 | Shim, Red .002 | A/R | |
| 76 | 756 268 006 | Ring, Brg Spcr .435 Thk | A/R | |
| | 756 268 007 | Ring, Brg Spcr .440 Thk | A/R | |
| | 756 268 008 | Ring, Brg Spcr .445 Thk | A/R | 2 |
| | 756 268 009 | Ring, Brg Spcr .450 Thk | A/R | |
| | 756 268 010 | Ring, Brg Spcr .455 Thk | A/R | |
| 78 | 756 269 | Ring, Space Input Shaft Rear ,278 Thk | 1 | |
| 84 | 762 292 | Ring, Split Ret. | 1 | |
| 90 | 769 453 | Shaft, Input | 1 | |
| 103 | 883 988 | Tube, Shipping, Oil Seal Protector | 1 | |
| 115 | 927 828 | Washer, Between Bearing & Yokes (1.957 ID x 2.50 OD x .125 Thk) | 1 | |

FOOTNOTES:

1. Select shims (Item #71) to achieve .003 to .008 end float.
2. Select correct bearing spacer ring thickness (Item #76) to achieve .003 to .008 end float.

TC-38 INPUT SHAFT

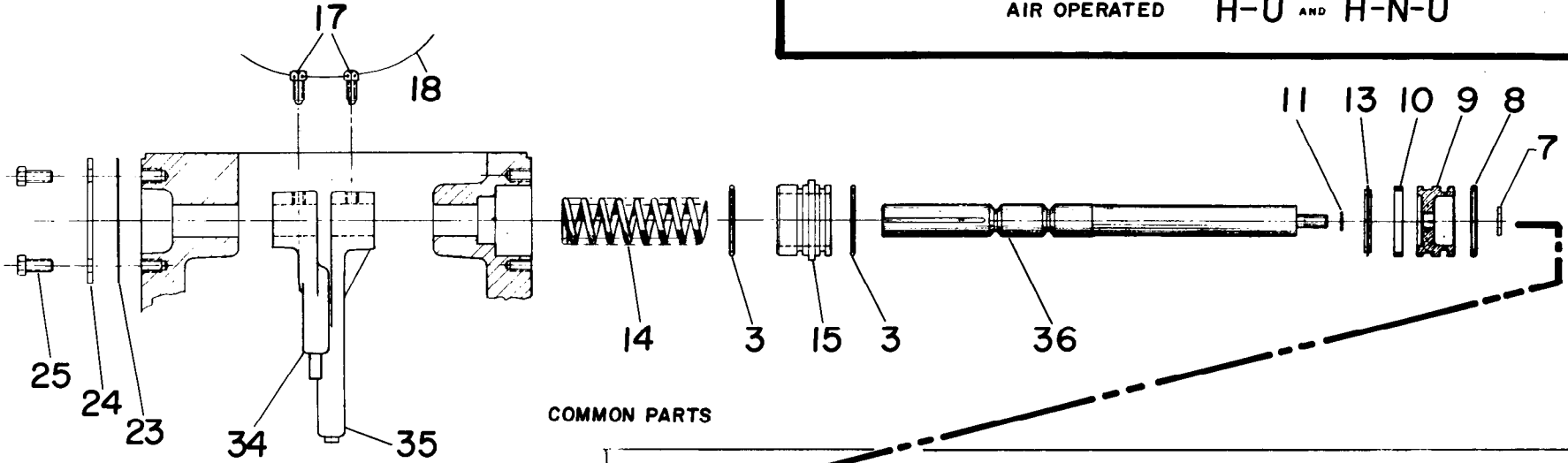


TC 38 SERVICE AND PARTS MANUAL

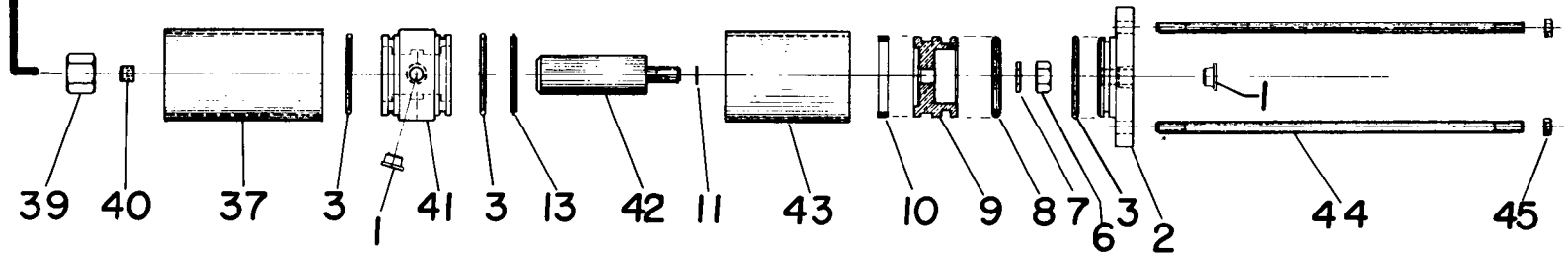
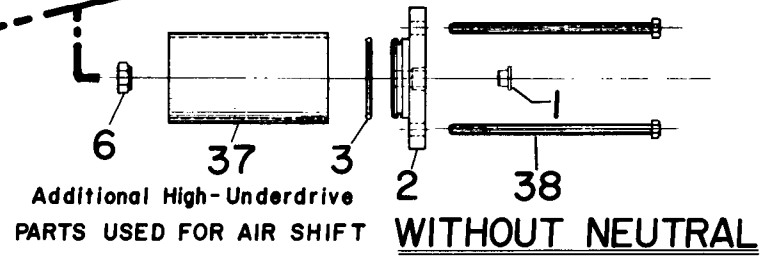
| ITEM | PART NO. | DESCRIPTION | QUANTITY | ITEM | PART NO. | DESCRIPTION | QUANTITY |
|------|-------------|---------------------------------|----------|------|----------|--------------------------|----------|
| 1 | 758 338 | Plastic Plug | 1 | 14 | 777 485 | Spring, Air Shift Return | 1 |
| 2 | 235 352 | Cap, Air Shift Cyl. | 1 | 15 | 883 479 | Adaptor, Air Shift Cyl. | 1 |
| 3 | 675 224 | O-Ring, Air Shift Cap & Adaptor | 3 | 16 | 367 295 | Fork, Front Drive Shift | 1 |
| 4 | 883 887 006 | Tube, Air Shift | 1 | 17 | 724 222 | Set Screw | 1 |
| 5 | 265 892 | Capscrew, Shift Cyl. Mtg. | 4 | 18 | 947 223 | Lockwire | 1 |
| 6 | 688 464 | Nut, Shift Piston | 1 | 19 | 758 364 | Plastic Plug | 1 |
| 7 | 927 643 | Washer, Shift Piston | 1 | 20 | 798 245 | Switch, Indicator | 1 |
| 8 | 675 326 | O-Ring, Shift Piston | 1 | 21 | 927 427 | Washer, Copper | 1 |
| 9 | 753 232 | Piston, Shift | 1 | 22 | 746 678 | Dowel, Switch Operating | 1 |
| 10 | 339 223 | Felt Ring, Shift Piston | 1 | 23 | 427 399 | Gasket, Shift Shaft Cap | 1 |
| 11 | 782 288 | O-Ring, Shift Shaft | 1 | 24 | 235 372 | Cap, Shift Shaft | 1 |
| 12 | 769 285 | Shaft, Air Front Drive Shift | 1 | 25 | 265 343 | Capscrew, 1/4-20 x 1/2 | 4 |
| 13 | 736 747 | Ring, Nylon Bump | 1 | | | | |

Air Operated Front Drive Declutch

AIR OPERATED H-U AND H-N-U



COMMON PARTS



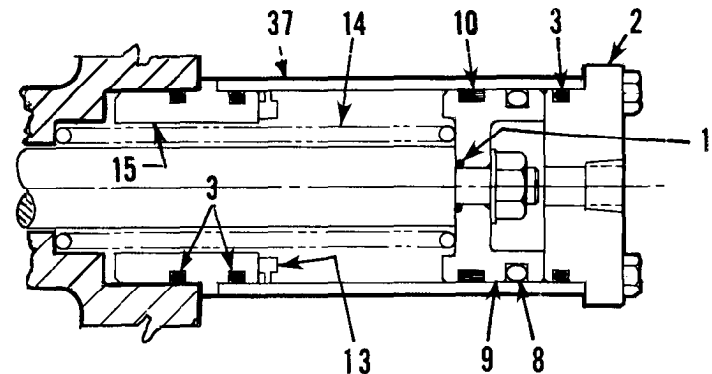
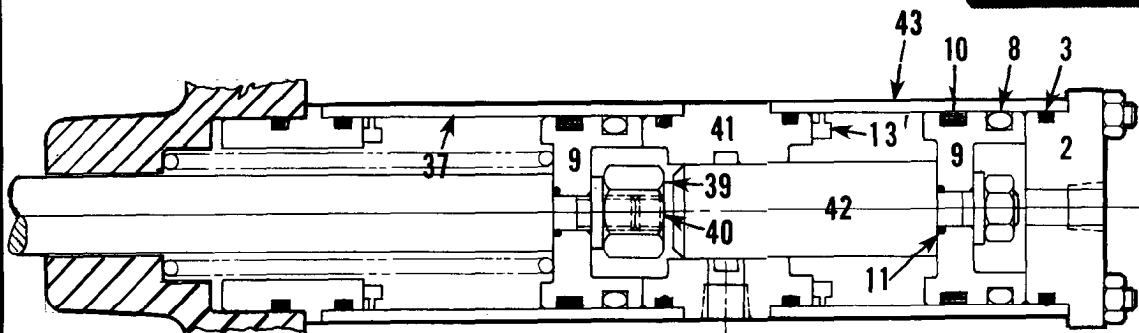
ADDITIONAL HIGH-NEUTRAL-UNDERDRIVE PARTS WITH NEUTRAL (Required with PTO and Air Shift)

H-N-U Air Shift

| ITEM | PART NO. | DESCRIPTION | QUANTITY |
|------|-------------|------------------------------------|----------|
| 1 | 758 338 | Plastic Plug | 2 |
| 2 | 235 352 | Cap, Air Shift Cyl. | 1 |
| 3 | 675 224 | O-Ring, Air Shift & Adaptor | 5 |
| 6 | 688 464 | Nut, Shift Piston | 1 |
| 7 | 927 643 | Washer, Shift Piston | 2 |
| 8 | 675 326 | O-Ring, Shift Piston | 2 |
| 9 | 753 232 | Piston, Shift | 2 |
| 10 | 339 223 | Felt Ring, Shift Piston | 2 |
| 11 | 782 288 | O-Ring, Shift Shaft | 2 |
| 13 | 736 747 | Ring, Nylon Bump | 2 |
| 14 | 777 485 | Spring, Air Shift Return | 1 |
| 15 | 883 479 | Adaptor, Air Shift Cyl. | 1 |
| 17 | 724 222 | Set Screw | 2 |
| 18 | 947 223 | Lockwire | 2 |
| 23 | 427 399 | Gasket, Shift Shaft Cap | 1 |
| 24 | 235 372 | Cap, Shift Shaft | 1 |
| 25 | 265 343 | Capscrew, 1/4-20 x 1/2 | 4 |
| 34 | 367 294 | Fork, Direct Drive Shift | 1 |
| 35 | 367 268 | Fork, Under Drive Shift | 1 |
| 36 | 742 877 | Shaft, H-N-U Air Shift | 1 |
| 37 | 883 887 003 | Tube, Shift Cyl. | 1 |
| 39 | 688 643 | Nut, Special | 1 |
| 40 | 724 582 | Set Screw, 3/8-24 x 1/4 Allan Head | 1 |
| 41 | 883 893 | Adaptor, Piggyback Cyl. | 1 |
| 42 | 769 286 | Shaft, Piggyback Cyl. | 1 |
| 43 | 883 887 007 | Tube, Piggyback Cyl. & PTO Cyl. | 1 |
| 44 | 788 546 006 | Stud, Piggyback Cyl. Mtg. | 4 |
| 45 | 688 323 | Nut, 1/4-28 | 4 |

H-U Air Shift

| ITEM | PART NO. | DESCRIPTION | QUANTITY |
|------|-------------|---|----------|
| 1 | 758 338 | Plastic Plug | 1 |
| 2 | 235 352 | Cap, Air Shift Cyl. | 1 |
| 3 | 675 224 | O-Ring, Air Shift Cap & Adaptor | 3 |
| 6 | 688 464 | Nut, Shift Piston | 1 |
| 7 | 927 643 | Washer, Shift Piston | 1 |
| 8 | 675 326 | O-Ring, Shift Piston | 1 |
| 9 | 753 232 | Piston, Shift | 1 |
| 10 | 339 223 | Felt Ring, Shift Piston | 1 |
| 11 | 782 288 | O-Ring, Shift Shaft | 1 |
| 13 | 736 747 | Ring, Nylon Bump | 1 |
| 14 | 777 485 | Spring, Air Shift Return | 1 |
| 15 | 883 479 | Adaptor, Air Shift Cyl. | 1 |
| 17 | 724 222 | Set Screw | 2 |
| 18 | 947 223 | Lockwire | 2 |
| 23 | 427 399 | Gasket, Shift Shaft Cap | 1 |
| 24 | 235 372 | Cap, Shift Shaft | 1 |
| 25 | 265 343 | Capscrew 1/4-20 x 1/2 | 4 |
| 34 | 367 294 | Fork, Direct Drive Shift | 1 |
| 35 | 367 268 | Fork, Under Drive Shift | 1 |
| 36 | 742 877 | Shaft H-N-U Air Shift | 1 |
| 37 | 883 887 003 | Tube, Shift Cyl. | 1 |
| 38 | 265 982 | Capscrew, Air Shift Cyl. 1/2-20 x 4 3/4 | 4 |



— 17 —

PARTS NOT DESIGNATED ON A DRAWING

| ITEM | PART NO. | DESCRIPTION | QUANTITY |
|------|----------|---|----------|
| 51 | 478 254 | Housing, Main Case | 1 |
| 94 | 793 377 | Cover, Main Case | 1 |
| 39 | 427 464 | Gasket, Main Cover | 1 |
| 32 | 273 687 | Bracket, Case Lifting | 2 |
| 27 | 265 239 | Capscrew, Cover Mtg. $\frac{7}{16}$ -14 x 1 | 16 |
| 26 | 265 238 | Capscrew, Cover Mtg. $\frac{7}{16}$ -14 x 1 $\frac{1}{4}$ | 2 |
| 107 | 927 749 | Washer: Cover Mtg. Screw $\frac{7}{16}$ Lock | 18 |
| 52 | 626 228 | Label, Serial Plate | 1 |
| 62 | 724 276 | Screw, Serial Plate Mtg. Drive | 2 |
| 80 | 758 274 | Plug, $\frac{3}{4}$ NPT Magnetic Drain | 1 |
| 79 | 758 229 | Plug, $\frac{3}{4}$ NPT Fill and Level | 2 |
| 81 | 758 293 | Plug, $\frac{1}{2}$ NPT Return Line Hole | 1 |

REFER TO FIGS. 1 AND 2 (PAGE 2)